

WEBSITE:



SEASON 9 | 2021-2022

**EC  
TC**  
emerald coast  
theatre company

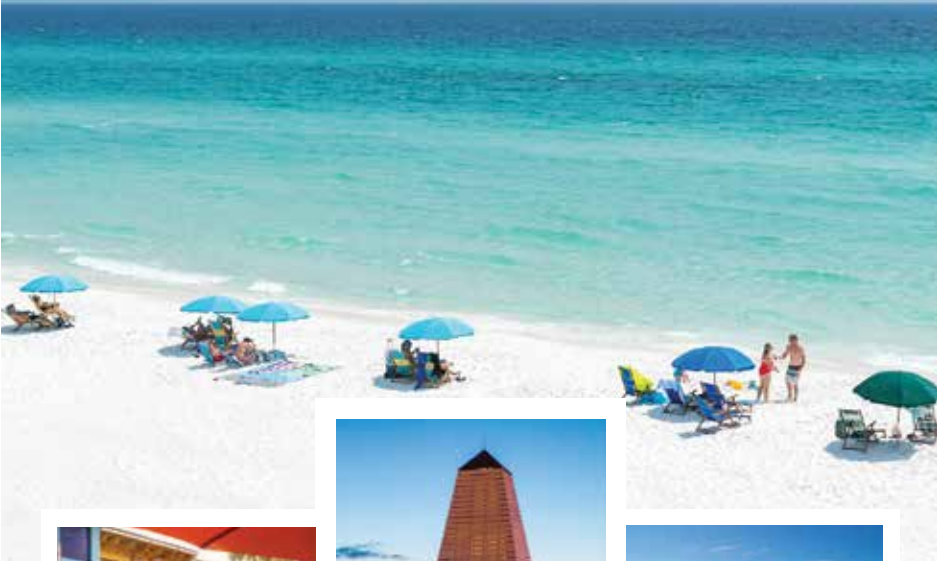
**WINTER 2021-2022**





SOUTH WALTON  
FLORIDA

# FIND YOUR PERFECT BEACH®



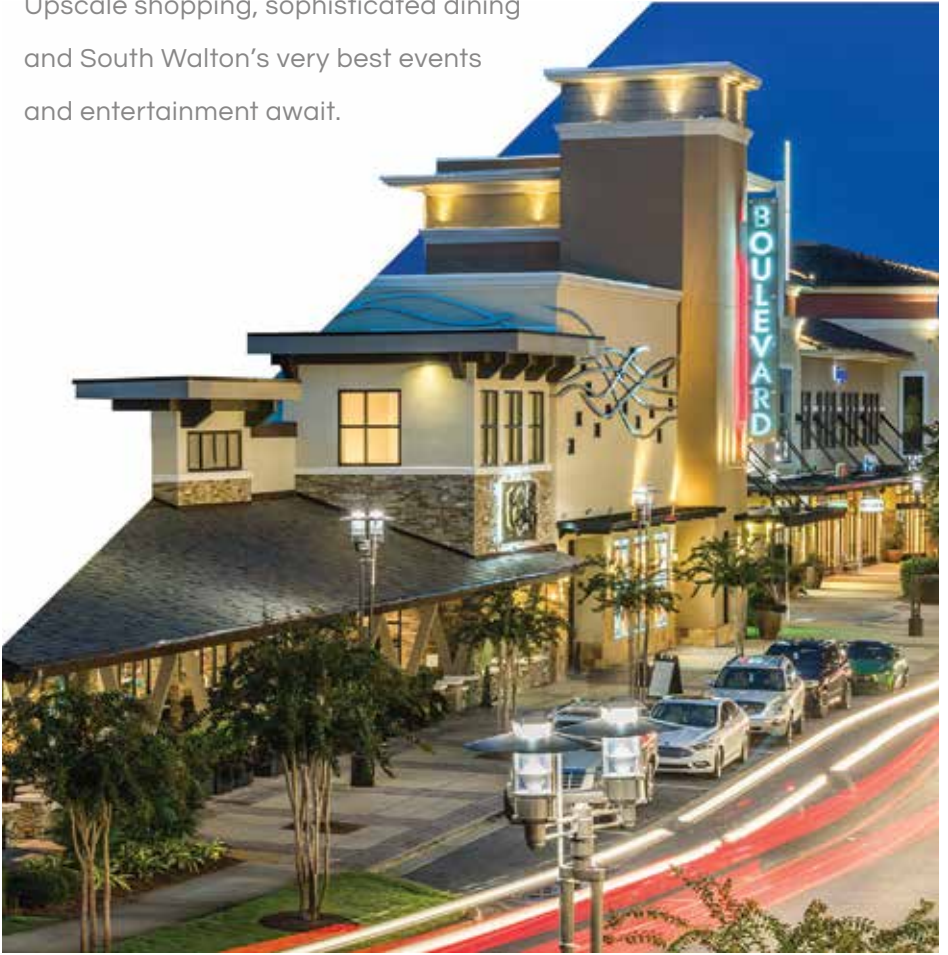
THE WALTON COUNTY TOURISM DEPARTMENT  
PROUDLY SUPPORTS EMERALD COAST THEATRE COMPANY

MIRAMAR BEACH • SEASCAPE • SANDESTIN • DUNE ALLEN • GULF PLACE • SANTA ROSA BEACH • BLUE MOUNTAIN BEACH  
GRAYTON BEACH • WATERCOLOR • SEASIDE • SEAGROVE • WATERSOUND • SEACREST • ALYS BEACH • ROSEMARY BEACH • INLET BEACH

[VISITSOUTHWALTON.COM](http://VISITSOUTHWALTON.COM)

# A GRAND EXPERIENCE

Upscale shopping, sophisticated dining and South Walton's very best events and entertainment await.



[grandboulevard.com](http://grandboulevard.com)

**GRAND BOULEVARD**

---



**WE MAKE NORTHWEST FLORIDA  
A WONDERFUL PLACE TO LIVE,  
WORK AND PLAY**

**ARTS**

**EDUCATION**

**ENVIRONMENT**

**HEALTH CARE**

The St. Joe Community Foundation, Inc. was create with the express purpose of making Northwest Florida a wonderful place to live, work and play. Since 1999 the Foundation has contributed over \$29 Million in grants in Northwest Florida to enhance cultural arts, strengthen education, improve healthcare and protect the environment. How can the Foundation help you?



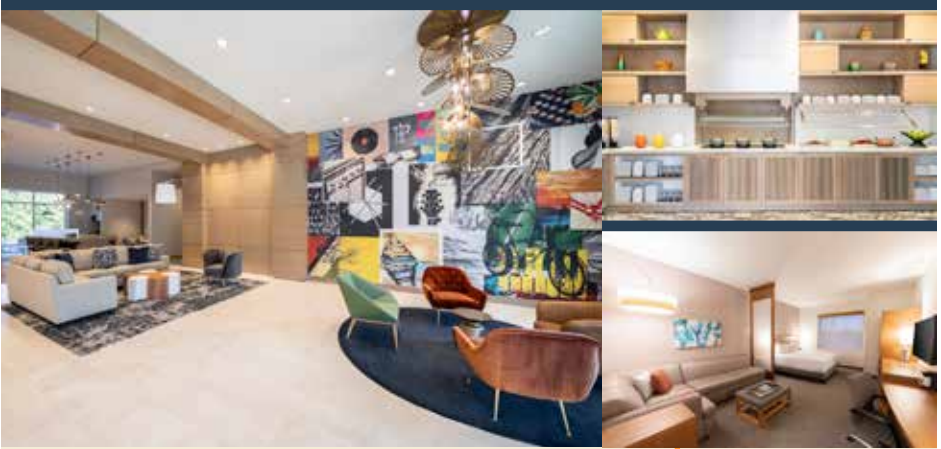
**FOR MORE INFORMATION, VISIT [JOEFUNDATION.COM](http://JOEFUNDATION.COM)**

© The St. Joe Company 2021 All Rights Reserved. "St. Joe Community Foundation" is a service mark of The St. Joe Company or its affiliates.



# THE COMFORT YOU DESERVE THE CONVENIENCE YOU CRAVE

Keeping you satisfied is what makes Hyatt Place Sandestin at Grand Boulevard a different place. Here, you'll find style and 24/7 convenience along with every modern comfort you deserve.



## FREE WIFI

Oh the places you'll go with free Wi-Fi and remote printing from everywhere. Plus, enjoy free public computers with high-speed internet access.

## ROOMY ROOMS

Rooms should always feel, well, roomy, and we made no exception here with space to work, play, or get that much-needed rest and relaxation.

## FITNESS CENTER

Recharge at our 24-hour Fitness Center featuring cardio equipment with LCD touchscreens and free ear buds or make a splash in our outdoor pool.

## THE MARKET

Savor freshly prepared meals any time, day or night, or enjoy perfectly packaged bowls, boards, and salads from our 24/7 Market.

Present this ad at The Bar located inside Hyatt Place Sandestin, and save 20% off your order.

**HYATT PLACE SANDESTIN  
AT GRAND BOULEVARD**  
325 Grand Boulevard  
Miramar Beach, FL 32550  
P 850 650 7611  
[hyattplacesandestingrandblvd.com](http://hyattplacesandestingrandblvd.com)





# OUR PASSION IS TO HELP YOU FOLLOW YOURS

**COURTYARD®**  
BY MARRIOTT

## GUEST ROOMS

Retreat to relaxation in one of our spacious guest rooms or suites, featuring free Wi-Fi, ergonomic workstations, plush bedding, in-room climate control, and flat-screen LCD TVs with premium movie channels and Netflix. Accessible rooms available upon request.

## BISTRO

Fuel up for the day ahead with a variety of breakfast options or unwind in the evening with a handcrafted cocktail and American cuisine at The Bistro - our onsite restaurant. We proudly serve Starbucks® coffee 24/7, too!

## AMENITIES

Stay comfortable, productive, and connected with everything you need to move forward. Enjoy our outdoor pool with a hot tub, 24/7 Fitness Center, on-site laundry facilities, 24/7 Business Center, daily housekeeping, and The Market - a 24-hour pantry.

## NEARBY ATTRACTIONS

We are conveniently located just steps away from the Grand Boulevard Town Center and only 2-miles from Silver Sands Premium Outlets. Additionally, we are only minutes away from the unique coastal communities of 30A and the beautiful beaches of South Walton.

## MEETINGS & EVENTS

Encourage collaboration, foster creativity, and boost productivity with your next business meeting or event in one of our four meeting spaces with audiovisual equipment and a variety of food and beverage offerings.

## BOOK DIRECT TODAY

To reserve your room, call  
800 MARRIOTT or visit  
[courtyardsandestin.com](http://courtyardsandestin.com).

## Courtyard by Marriott® Sandestin at Grand Boulevard

100 Grand Boulevard  
Miramar Beach, FL 32550  
850.650.7411

Present this ad at The Bistro,  
located inside Courtyard  
Sandestin, and save  
20% off your order.



# VIN'TIJ

FOOD & WINE

## A Locals' Favorite For Over 20 Years!

Reservations Recommended for Lunch and Dinner



Follow Us: [f](#) [@](#) [t](#) @vintijfoodandwine

500 Grand Boulevard #100K | Miramar Beach, Florida | 850-650-9820 | [www.vintij.com](http://www.vintij.com)

**OCEAN REEF**  
EST. 1982  
VACATION RENTALS & REAL ESTATE

# The best seats in (or out of) the House.

500+ Vacation Rentals



Destin: 10221 Emerald Coast Pkwy | Grayton Beach: 15 Pine Street | Seacrest Beach: 9961 Scenic 30A

[oceanreefresorts.com](http://oceanreefresorts.com) | 800.782.8736



# A NOTE FROM THE DIRECTORS



We are staying warm and cozy this winter season here at ECTC. We are excited to offer you so many wonderful options for enrichment, education, or just plain entertainment. The theme of the 2021/2022 season is fun and funny and this winter's shows will not disappoint.

Our Junior Company (high school aged students) members will warm up even the coldest heart with their steampunk version of *The Snow Queen*. With over 350 Butler and Destin Elementary school students slated to enjoy this modern take on *Frozen*, we just can't be more proud of our pre-professional company members who are working so diligently to follow their dreams. Recently ECTC Staff and Teaching artists took this group to the Florida Theatre Conference. This was such a wonderful opportunity for our Jr. Company to connect with colleges theatre programs, take workshops from other theatre professionals and educators, as well as perform and receive feedback from the conference adjudicators. We are so excited to connect these students with amazing options and opportunities for their future.

If that doesn't get you in the holiday mood, then grab yourself some hot cocoa and shortbread cookies to enjoy while we take you back to the 1940's in *Miracle on 34th Street, A Live Musical Radio Play*. This show takes us back to a simpler time when the only ringing heard on the street was from the Salvation Army Santa Claus. Follow our precocious and delightful Susan as she learns to have a little faith and creates some miracles of her own along the way! The cast includes some of your favorite ECTC professional actors and introduces a few more. We are especially excited that resident UWF Theatre Professor Marci Duncan is the guest director for this show.

We will keep the fires burning here at ECTC with *Miss Abigail's Guide to Dating, Mating, and Marriage* in January. Join Miss Abigail and Pedro as they help their live studio audience navigate the murky waters of love, and maybe find a spark or two along the way. If the cure for life is comedy then this is the remedy you're looking for.

What else is there to do in January but come see a show? That's why we've also got *The Marvelous Wonderettes* showing in January through March. Wipe that lipstick off your collar and time travel to the 1958 Springfield Prom with us where you can be serenaded with all the classics like "Lollipop" and "Dream Lover." Great music, fine wine, and a good time are central to this cabaret stage addition to our professional season.

We round out our sizzling winter offerings with *2 Across* in February, an intriguing look at two strangers on the San Francisco BART train, and how a crossword puzzle teaches them each a little more about life and its unpredictability. This is the type of show ECTC fans have come to love. If you enjoyed *Bakersfield Mist, Dancing Lessons, and Maytag Virgin* you are going to love the comedy and connection that take place in *2 Across*.

Finally, our *Storyteller Series* is not to be missed with your ECTC favorites on stage: Shirley Simpson, Bruce Collier, and Allan Tuttle are all presenting stories that share glimpses into history.

We're keeping the home fires burning for you here at ECTC this winter. Come join us for some holiday cheer and a little faith building to keep your hope in humanity alive.

We wish you the warmest Christmas and holiday wishes and the most prosperous New Year.

From our ECTC family to yours,

Nathanael and Anna Fisher

Producing Artistic Director and Associate Artistic & Education Director

*Emerald Coast Theatre Company Presents*

# THE SNOW QUEEN

SPONSORED BY:  
**Premier Media  
Technologies**

Book by Kirsten Brandt & Rick Lombardo • Music by Haddon Kime  
Lyrics by Kirsten Brandt, Haddon Kime & Rick Lombardo  
Additional Music by Rick Lombardo

**DECEMBER 3, 4, 10, 11, 2021**

---

## STARRING

---

Lainey Whitten  
Sean Rushford  
Addison Lewis  
Arianna Haskaj  
Clara Taylor

Rylan Shaffer  
Savanna Herndon  
Lily Howland  
Caleb Van Tassel  
Ethan Craig

---

DIRECTOR  
**PHILLIP PADGET**

MUSIC DIRECTOR  
**TARA PADGET**

MAKEUP & HAIR DESIGN  
**SASHA BLAIR**

COSTUME & PROP DESIGN  
**TARA PADGET**

SET & LIGHTING DESIGN  
**WALKER RIVARD**

STAGE MANAGER & SOUND DESIGN  
**PHILLIP PADGET**

---

Based on the story by Hans Christian Andersen. Musical Arrangements by Haddon Kime, Dolores Duran-Cefalu, and Emily Intersimone Originally Produced at the 2014 New York Musical Theatre Festival. World Premiere at San Jose Repertory Theatre, Rick Lombardo, Artistic Director.

Presented by special arrangement with Stage Rights ([www.stagerights.com](http://www.stagerights.com))  
The videotaping or other video or audio recording of this production is strictly prohibited.

---

## SPECIAL THANKS

---

University of West Florida Theatre Department, Gulf Coast State College Department of Visual and Performing Arts, Habitat for Humanity Restore, Lori Drew, Architectural Signage Systems, RSVP Events, the Leading Ladies of ECTC, and the ECTC Volunteers.

### Emerald Coast Theatre Company Board

Stacey Brady, Jamie Hall, Jason Hedden, Sherry Londe,  
Zandra Wolfgram, Melissa Oropesa Carroll, Anna Fisher, Nathanael Fisher

---



Sponsored in part by the State of Florida, Department of State, Division of Arts and Culture, and the Florida Council on Arts and Culture.



Emerald Coast Theatre Company is a member of Theatre Communications Group (TCG), the national organization for the American theatre.

---

## CAST

---

SNOW QUEEN.....	Clara Taylor
TROLL.....	Rylan Shaffer
THE RIVER.....	Savanna Herndon
GARDEN WITCH.....	Lily Howland
FLOWER CHORUS.....	Savanna Herndon, Arianna Hasdaj
GERDA.....	Lainey Whitten
KAI.....	Sean Rushford
ROSE.....	Addison Lewis
GRANDMOTHER.....	Arianna Haskaj
OLD CROW.....	Caleb Van Tassel
LADY CROW.....	Arianna Hasdaj
THE PRINCE.....	Ethan Craig
THE PRINCESS.....	Addison Lewis
ROBBER GANG.....	Walker Rivard, Rylan Shaffer, Caleb Van Tassel
ROBBER MOTHER.....	Arianna Haskaj
ROBBER GIRL.....	Savanna Herndon
REINDEER.....	Walker Rivard
WOMAN OF THE NORTH.....	Lily Howland

---

There will be one 15 minute intermission.

---

## ABOUT THE WRITERS

---

**Rick Lombardo** is an award-winning American stage director, Artistic Director and adaptor. He was the Artistic Director of San Jose Repertory Theatre, the flagship professional theatre of Silicon Valley, for six seasons, as well as serving as the Producing Artistic Director for 13 seasons at New Repertory Theatre in Boston. His work has been seen at every level of the American Theatre, including Broadway and major regional theatres. An award-winning stage director and adapter, in 2009 he was awarded the Norton Award for Sustained Excellence from the Boston Theatre Critics Association. His award-winning productions include *Game On*, *The Snow Queen*, *As You Like It*, *Sweeney Todd*, *The Clean House*, *Ragtime*, *Waiting For Godot*, *A Streetcar Named Desire* several works by Harold Pinter. His world premiere production of *Bill W and Dr. Bob* enjoyed an extended run off Broadway. As a writer, his successful adaptations for the stage include *A Christmas Carol*, along with the musicals *Scapin* and *The Snow Queen*. [www.ricklombardo.net](http://www.ricklombardo.net)

**Kirsten Brandt** is an award winning playwright, director and producer. She served for six seasons as Artistic Director of Sledgehammer Theatre where she directed over a dozen plays and wrote *Berzkerkgäng*, *The Frankenstein Project* and *NU*. She was the Associate Artistic Director of San Jose Repertory Theatre, where she directed *Dr. Faustus*, *Next Fall*, *The Big Meal*, *Legacy of Light* and *Groundswell*, among others. As a director, Ms. Brandt work has been seen at San Jose Repertory Theatre, The Old Globe, TheatreWorks, La Jolla Playhouse, San Diego Repertory, Santa Cruz Shakespeare, North Coast Repertory, and Arizona Theatre Company. She is the co-adaptor of Henrik Ibsen's *A Doll's House*, which had its world premiere at the Old Globe Theatre. Her telematic, multi-site play *The Thinning Veil* was produced at the University of California, Santa Cruz. Her other plays include *The Mechanic's Daughter*, *The Waves* and an adaptation of *Wuthering Heights*. [www.kirstenbrandt.com](http://www.kirstenbrandt.com)

**Haddon Kime** is a composer, songwriter, and sound designer who currently lives in Atlanta with his wife and 5-year-old daughter. Other original musical adaptations include *Scapin*, and *A Christmas Carol*. Off Broadway credits include *The Atheist* (with Chris Pine), *Haymarket*, *The Blowin of Baile Gall*. Regional credits include *By The Way*, *Meet Vera Stark* and *Managing Maxine* for the Alliance Theatre. *A Streetcar Named Desire* and *The Pillowman* for New Repertory Theatre, and *Richard III* for Georgia Shakespeare. Haddon is the winner of the 2004 & 2007 IRNE award for best original music/sound design as well as the recipient of a 2009 TANN Foundation Award for Artistic Excellence, and more recently the recipient of a 2015 Reiser Atlanta Artists Lab grant from the Alliance Theatre. You can learn more about and hear Haddon's work at [www.haddonkime.com](http://www.haddonkime.com).



# MKAF SEASON OF EVENTS



**mkaf**  
**Festival  
of the Arts**  
mattie kelly arts foundation

**OCTOBER 30<sup>TH</sup> & 31<sup>ST</sup>**

**SATURDAY 9 AM - 5 PM | SUNDAY 10 AM - 4 PM**

Annual arts festival featuring fine artists exhibiting their original art, live music, food trucks, beer & wine.

**FREE EVENT!**

**PRESENTED BY:**

  
**SOUTH WALTON  
FLORIDA**

**J. LEON**  
GALLERY + STUDIO



**mkaf**  
**Artful  
Dining Series**  
mattie kelly arts foundation



**NOVEMBER 11<sup>TH</sup>**

Annual wine walkabout at Ruth's Chris Steak House at Silver Shells Resort in Destin.

**PURCHASE TICKETS AT [MKAF.ORG](http://MKAF.ORG)**



**mkaf**  
**Concerts  
in the Village**  
mattie kelly arts foundation

**SPRING & FALL CONCERT SERIES**

Annual concert series featuring a diverse genre of music suitable for all ages and families. Bring your own chair or blanket. MKAF members are eligible to purchase VIP Event Tables.

**FOLLOW US ON FACEBOOK @MATTIEKELLYARTSFOUNDATION FOR THE LATEST EVENT UPDATES**

*WE PROUDLY SUPPORT  
EMERALD COAST THEATRE COMPANY*



**BRIAN HAUGEN**  
*Senior Vice President,  
Investments*

**STEVE CANN**  
*Associate Vice President,  
Wealth Management*

*“You’ve spent a career building your wealth,  
we spend our careers helping you protect it.”*



34851 Emerald Coast Pkwy., Suite 200  
Destin, FL 32541  
850-650-0990  
[www.emeraldcoastwealthadvisors.com](http://www.emeraldcoastwealthadvisors.com)





## NEED SPACE? EVERY ROOM IS A SUITE

*Relax and Refresh at Residence Inn Sandestin*

At Residence Inn Sandestin, South Walton's premier pet-friendly extended stay hotel, we have space so you can feel at home while on the road. Every suite has a workspace and a fully-equipped kitchen. Enjoy the complimentary breakfast buffet each morning or sample a variety of cuisines throughout the week at our evening Residence Inn Mix events. Plus, you're just steps away from world-class dining, shopping, and entertainment options located along Grand Boulevard.

**Residence** INN<sup>®</sup>  
BY MARRIOTT

**RESIDENCE INN BY MARRIOTT  
SANDESTIN AT GRAND BOULEVARD**

300 Grand Boulevard, Miramar Beach, FL 32550  
850.650.7811 | [residenceinnsandestin.com](http://residenceinnsandestin.com)



CULTURAL  
**arts**  
ALLIANCE  
*of walton county*

**flutterby**  
FINE ARTS FESTIVAL

**AM SW**  
ART MONTH

**ArtWalk**

**Education TOUR**  
HOMES

**JONSONG WRITERS FESTIVAL**

**FOSTER GALLERY**

**UMA**  
UNIVERSITY MUSEUM AND ARTS CENTER

*We Foster Creativity*  
**Help us grow**

[CulturalArtsAlliance.com/join](http://CulturalArtsAlliance.com/join) @o



**ENJOY 10% OFF  
a class with code:  
theatre18**



**The Shard Shop** is a friendly Make-Your-Own-Art boutique!

We offer **daily classes** in ShardWorx, the art of glass on a painted canvas! The result is intoxicating!

**Classes are an hour** long and are suitable for **all skill levels!**

Ages 6-96 are welcome! Check us out for parties, family gatherings, and **team building** events!



**MAKEARTNOW!**

**GRAYTON BEACH FL: 850.231.0544**  
**NEW ORLEANS LA: 504.571.5342**

**ShardShop.com facebook.com/ShardShop**



Save time and money with a whole home automation solution!



- ▶ AUDIO
- ▶ VIDEO
- ▶ SECURITY

- ▶ AUTOMATION
- ▶ HOME THEATER

We Are Only A Phone Call Away!

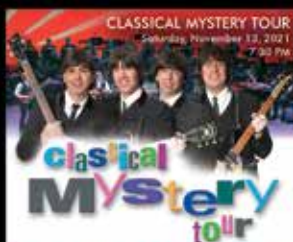
*850-269-1010*

[PremierMediaTechnologies.com](http://PremierMediaTechnologies.com)



# SINFONIA GULF COAST

DEMETRIUS FULLER, MUSIC & ARTISTIC DIRECTOR



Season  
Presenting Sponsor



Presenting  
Concerts Sponsor



Presenting  
Media Sponsor



Classical Connections  
Presenting Sponsor



SINFONIA BOX OFFICE: 850.460.8800 SinfoniaGulfCoast.org



*Emerald Coast Theatre Company Presents*

# MIRACLE ON 34TH STREET

## A LIVE MUSICAL RADIO PLAY

Adapted from the 1947 Lux Radio Broadcast by Lance Arthur Smith  
Original Songs & Arrangements by Jon Lorenzo

**DECEMBER 9 - 19, 2021**

---

### STARRING

---



Zoe Fisher



Tegan Shaffer



Bruce Collier



Truman Griffin



Hillary Marshall



Abigail Huhtala



Vincent Pelligrino

---

DIRECTOR  
**MARCI DUNCAN**

MUSIC DIRECTOR  
**VINCENT PELLIGRINO**

COSTUME & PROP DESIGN  
**ANNA FISHER**

SET & LIGHTING DESIGN  
**REBECA LAKE & NATHAN SACZYNSKI**

STAGE MANAGER & SOUND DESIGN  
**PHILLIP PADGETT**

---

Presented by special arrangement with Stage Rights ([www.stagerights.com](http://www.stagerights.com))  
Originally commissioned and produced by San Diego Musical Theatre  
The videotaping or other video or audio recording of this production is strictly prohibited.

---

### SPECIAL THANKS

---

University of West Florida Theatre Department, Gulf Coast State College Department of Visual and Performing Arts, Habitat for Humanity Restore, Lori Drew, Architectural Signage Systems, RSVP Events, the Leading Ladies of ECTC, and the ECTC Volunteers.

**Emerald Coast Theatre Company Board**  
Stacey Brady, Jamie Hall, Jason Hedden, Sherry Londe,  
Zandra Wolfgram, Melissa Oropesa Carroll, Anna Fisher, Nathanael Fisher



Sponsored in part by the State of Florida,  
Department of State, Division of Arts and  
Culture, and the Florida Council on Arts and  
Culture.



Emerald Coast Theatre Company is a member of  
Theatre Communications Group (TCG),  
the national organization for the American  
theatre.

---

## CAST

---

KRISTOFER VAN LISBERG, KRIS KRINGLE .....	Bruce Collier
SUSAN WALKER .....	Zoe Fisher, Tegan Shaffer
<i>Zoe Fisher as Susan December 9, 10, 17, &amp; 19 at 2:30pm   Tegan Shaffer as Susan December 11, 12, 16, &amp; 19 at 7:30pm.</i>	
<i>Child actor assignments subject to change.</i>	
DORIS WALKER, MACY'S PR EXPERT, MOM, GIRL & OTHERS .....	Hillary Marshall
FRED GAILEY .....	Truman Griffin
OLIVIA GLATT .....	Abigail Huhtala
ANNOUNCER, FOLEY ARTIST, JUDGE & OTHERS .....	Vincent Pelligrino

---

There will be one 15 minute intermission.

---

## ABOUT THE WRITERS

---

**Lance Arthur Smith** received his BA in Theatre with concentrations in Writing and Acting at the University of New Mexico under Emmy-winning writer Digby Wolfe (*Laugh-In*). His interstitial musical shorts appeared in the first three years of the University's Dionysus In The Round festival of one acts, and his plays *True Blue* and *Brushing The Center* (co-written with Phillip Hughes) were produced there. Commissions include *The Price of Peace* (New Village Arts) and *Miracle On 34th Street* (San Diego Musical Theatre). His play *The Two Wisemen Of Las Cruces* was a Eugene O'Neill Theater Center Semifinalist and Princess Grace Award Semifinalist. Head Writer of the sci-fi pilot *ORBITAL BROADCAST ONE* for TFK/Wavebreaking, he also appeared as a series regular alongside Star Trek veterans George Takei, Walter Koenig, and Tim Russ. His book *Princess Geek* was recently published, a non-fiction account of parenting a girl in the age of geek chic.

**Jon Lorenz** is a composer, lyricist, arranger and playwright from San Diego. His musical *Alice* was selected for the ASCAP/Disney Musical Theater Workshop and optioned by NBC/Universal Live Theatricals. He co-created the award-winning hit 80s musical revue *Mixtape*, named San Diego's longest running homegrown musical by the San Diego Union Tribune. *Oz, An American Musical Fairy Tale* received five Craig Noel Award nominations from the San Diego Critic's Circle. Commissions include *Miracle On 34th Street* and *Pump Up The Volume: A 90s-Palooza*, for San Diego Musical Theatre. His original score for *Wit* (Lamb's Players) was nominated for a Craig Noel Award. His musicals for young performers are produced nationally and available through Russell House. Since 2007, he's been the lead composer/arranger for Lamb's Players' Festival Of Christmas, creating over 40 critically acclaimed original holiday songs and arrangements. An album of select holiday material is available on iTunes.

---

## ABOUT THE CAST & CREW

---

**Abigail Huhtala** (*Olivia Glatt*) Though Abigail has been performing on stage her entire life, she has lived on the Emerald Coast for the last 7 years performing regularly with Stage Crafters Community Theatre since 2015. Most notably as Mary Poppins in *Mary Poppins*, Judy Bernly in *9 to 5*, Morticia in *The Addams Family*, Cassie in *A Chorus Line*, and most recently as Frau Blucher in *Young Frankenstein*. Previously, she has performed here as a part of *The Marvelous Manhattan Comedy Club Fundraiser*, as a member of *The Village Belles*, a USO Military Tribute Show. She is thrilled to be working with ECTC once again,

bringing the joy of live theatre, music, and the holiday spirit to all.

**Bruce Collier** (*Kristofer Van Lisberg, Kris Kringle*) An Ohio native, Bruce has a B.F.A. degree in Theatre from Wright State University, and a J.D. from Tulane Law School in New Orleans. He worked for four years as a public defender in New Orleans. Bruce has performed professionally in summer stock in Ohio, at Alabama Shakespeare Festival, the Courtyard Playhouse in New York City, New Horizons Theatre in Michigan, The REP at Seaside, and Emerald Coast Theatre Company (ECTC). At

---

## ABOUT THE CAST & CREW

---

ECTC, Bruce has appeared in *Bakersfield Mist*, *A Wrinkle in Time*, *Winston Churchill: Through the Storm*, *It's a Wonderful Life*, *Around the World in 80 Days*, *The Fantasticks*, *A Christmas Carol*, and *Treasure Island*. He has also performed at The REP at Seaside in *The Homecoming*, *Who's Afraid of Virginia Woolf?*, and *Picasso at the Lapin Agile*. In 2021, as part of ECTC's Storyteller Series, Bruce premiered his original script, *Three Palaces at Yalta*, playing Josef Stalin, Winston Churchill and Franklin Roosevelt. January 11 of 2022, he will premiere *The Fall of April*, playing Stalin and Churchill, at ECTC. Both *Yalta* and *Through the Storm* were recently performed at Athens Chautauqua Festival in Georgia. Most recently, Bruce directed *Picasso at the Lapin Agile* at Northwest Florida State College.

**Truman Griffin** (*Fred Gailey*) is excited to be back at ECTC after having performed in *Miss Bennet: Christmas at Pemberley*. An Atlanta based actor, his credits include: *Dogfight* (Woodstock Arts); *Skintight* (Actors Express); *Camelot* (Atlanta Lyric); *Hand To God* (Alliance Theatre, understudy); *Dead Man Walking* (Atlanta Opera). Regional: *Mamma Mia!* and *The Best Little Whorehouse in Texas* (Springer Opera House). BA from Kennesaw State University. ACE certified personal trainer. Love to Rachel.

**Zoe Fisher** (*Susan Walker*) has been acting in educational shows at Emerald Coast Theatre Company since she was a four year old mini player. Some of her favorite roles have been Miss Hannigan in *Annie Kids*, Skipper in *Madagascar a Musical Adventure Jr.*, Bulda in *Frozen*, The Sun and Moon in *Peter Pan*, and many many ensemble roles. Zoe enjoys catching lizards and playing with friends when she's not on stage. She is thrilled to be in her first "intermission show." Zoe would like to thank God and her parents for giving her the opportunity to do what she loves.

**Tegan Shaffer** (*Susan Walker*) is 10 years old and moved from Kansas City to the Emerald Coast 2 years ago. Tegan is excited to be in her first professional show. Tegan loves dancing, singing and acting and has been performing since she was 3 years old. Recently, Tegan played Olaf in *Frozen Jr.* and played a Lemur in *Madagascar Jr.* at ECTC.

**Hillary Marshall** (*Doris Walker*) is a graduate of Oklahoma City University where she majored in

vocal performance. She is thrilled to be in her sixth production at ECTC after appearing in *First Date*, *A Christmas Carol*, *Treasure Island*, *A Midsummer Night's Dream*, and *Nunsense*. Originally from Colorado, she has had the opportunity to travel frequently and perform in a wide variety of productions. Some of her favorite roles include Morticia in *The Addams Family*, Velma Von Tussle in *Hairspray*, Kate Monster in *Avenue Q*, Shelby in *Steel Magnolias*, and Tanya in *Mamma Mia*. Along with performing, Hillary is graduating this December with her master's degree Mental Health Counseling from Troy University. She enjoys life in Florida and loves being involved with Emerald Coast Theater Company!

**Vincent Pelligrino** (*Announcer, Foley Artist, Judge & Others*) is thrilled to return to ECTC. Originally from Michigan, he holds an M.F.A. in Acting from West Virginia University. Regional performance credits include Greenbrier Valley Theatre, Meadowbrook Theatre, RWS Entertainment and Carnival Cruise Line. Last season at ECTC he was seen in *First Date* and *A Christmas Carol*, directed *Florida Girls*, *Popcorn Falls* and *Rainbow Fish*. He is currently serving as Assistant Professor of Theatre at Gulf Coast State College. [www.vincentpelligrino.com](http://www.vincentpelligrino.com)

**Marci Duncan** (*Director*) earned a BA in performance at Florida A&M University and her Masters in Acting at the University of Florida. She studied television and film acting with Evonne Suhor at Orlando's Art Sake Acting Studio, where she is a resident ensemble member, substitute instructor, and has starred in three consecutive seasons in their Play De Luna Series. Some of her extensive theatre credits includes *Two Trains Running*, *Seven Guitars*, *Crowns*, *Pretty Fire*, *The Contract*, *The Mountaintop* and *Best of Enemies*. Marci's film work includes (*Just*) *Another Day* co-starring with Jamie Hectar from HBO's *The Wire* and *Life is not a Fairytale: The Fantasia Barrino Story*, working with Debbie Allen and Fantasia Barrino. Marci just completed an upcoming network series for NBC. Marci provides actor coaching with her acting studio, Artists at Play Workshops and is a Professor of theatre at the University of West Florida.



# COME FOR THE SHOPPING *STAY FOR THE SAVINGS*

**Up to 65% Off at Northwest Florida's  
Ultimate Outlet with 110+ Stores**

Saks OFF 5TH

Tory Burch

Vans Outlet

The North Face

Columbia Factory Store

Disney Store Outlet

  
**SILVER SANDS  
PREMIUM OUTLETS®**  
A HOWARD GROUP AND SIMON CENTER

# IT'S TIME TO BRING DOWN THE HOUSE

PROUD SUPPORTERS OF THE  

---

LOCAL THEATER COMMUNITY





*Emerald Coast Theatre Company Presents*

# THE MARVELOUS WONDERETTES

Written & Created by Roger Bean

Musical Arrangements by Brian William Baker | Orchestrations by Michael Borth

Vocal Arrangements by Roger Bean & Brian William Baker

**JANUARY 21 - MARCH 6, 2022**

---

## STARRING



Rebeca Lake



Arianna Reyhner



Leigh Gladden



Aly Matthews

---

DIRECTOR

**VINCENT PELLGRINO**

STAGE MANAGER & SOUND DESIGN

**CAITLIN EILEEN TARABORI**

COSTUME & PROP DESIGN

**ANNA FISHER**

SET & LIGHTING DESIGN

**REBECA LAKE &  
NATHAN SACZYNSKI**

MUSIC DIRECTION

**VINCENT PELLGRINO**

---

Originally Produced for the New York Stage by David Elzer, Roger Bean & Peter Schneider.

The *Marvelous Wonderettes* premiered at Milwaukee Repertory Theater. Joseph Hanreddy, Artistic Director and Timothy J. Shields, Managing Director.

---

## SPECIAL THANKS

University of West Florida Theatre Department, Gulf Coast State College Department of Visual and Performing Arts, Habitat for Humanity Restore, Lori Drew, Architectural Signage Systems, RSVP Events, the Leading Ladies of ECTC, and the ECTC Volunteers.

### Emerald Coast Theatre Company Board

Stacey Brady, Jamie Hall, Jason Hedden, Sherry Londe,  
Zandra Wolfgram, Melissa Oropesa Carroll, Anna Fisher, Nathanael Fisher

---



Sponsored in part by the State of Florida,  
Department of State, Division of Arts and  
Culture, and the Florida Council on Arts and  
Culture.



Emerald Coast Theatre Company is a member of  
Theatre Communications Group (TCG),  
the national organization for the American  
theatre.

---

---

SUZU.....	Aly Matthews
CINDY LOU .....	Leigh Gladden
MISSY .....	Arianna Reyner
BETTY JEAN .....	Rebeca Lake
UNDERSTUDIES/SWINGS .....	Karly Johnson & Meghan Horrigan

---

There will be one 15 minute intermission.

**OUR MARVELOUS MUSIC**

Music Clearance by Rubicon II Music Clearance, Burbank, CA.  
 All Songs Used By Permission. All Rights Reserved.  
 All International Copyrights Secured.

- All I Have To Do Is Dream* by B. Bryant © courtesy of House of Bryant Publications.
- Allegheny Moon* by Al Hoffman & Dick Manning ©1956 (renewed) Music Sales Corporation (ASCAP), Al Hoffman Songs, Inc. (ASCAP).
- Born Too Late* by Charles Strouse & Fred Tobias © Used by special arrangement with Williamson Music, on behalf of Charles Strouse Music (ASCAP). All rights for Fred Tobias courtesy of Holee Music.  
 Chipmunk Cheer © Courtesy of Steele Spring Stage Rights.
- Dream Lover* by Bobby Darin © Used by arrangement with Alley Music Corporation, and Trio Music Company, Inc.
- Goodnight, Sweetheart, Goodnight* © words and music by Calvin Carter & James Hudson, Used through the courtesy of Arc Music Corp. (BMI)
- (Love is Like A) Heatwave* by Edward Holland, Jr., Lamont Dozier & Brian Holland © Stone Agate Music, courtesy of EMI Music Publishing.
- Hold Me, Thrill Me, Kiss Me* by Harry Noble, Jr. © EMI Mills Music, Inc.
- I Only Want To Be With You* by Mike Hawker & Ivor Raymonde ©1963 (renewed) Chappell Music Ltd. (PRS) All rights on behalf of Chappell Music Ltd. (PRS) administered by Chappell & Co. (ASCAP)
- It's In His Kiss* (The Shoop Shoop Song) by Rudy Clark © Used by permission of Trio Music Company, Inc.
- It's My Party* by Herb Weiner, John Gluck & Wally Gold ©1963 Chappell & Co. (ASCAP)
- Leader Of The Pack* by Jeff Barry, Ellie Greenwich & George Morton © Screen Gems-EMI Music Inc.
- Lipstick On Your Collar* by George Goehring, Edna Lewis ©1959 (renewed) Chappell & Co. (ASCAP)
- Lollipop* by Beverly Ross & Julius Dixon © Used by arrangement with Edward B. Marks Music Company
- Lucky Lips* by Jerry Leiber & Mike Stoller © Sony/ATV Music Publishing LLC
- Maybe* by Richard Barrett © EMI Longitude MusicRider
- Maybe I Know* by Jeff Barry & Ellie Greenwich © Used by arrangement with Universal – Songs of Polygram International, Inc. (BMI) and Trio Music Company, Inc.
- Mr. Lee* by Reather Dixon, Helen Gathers, Emma Pought, Jannie Pought & Laura Webb ©1957 (renewed) Unichappell Music, Inc. (BMI) & PRE Music Company (BMI)
- Mr. Sandman* by Pat Ballard © Used by permission of Edwin H. Morris & Company, a Division of MPL Communications Inc.
- Needle In A Haystack* by William Stevenson and Norman J. Whitfield © Stone Agate Music, courtesy of EMI Music Publishing
- Rescue Me* by Raynard Miner & Carl Smith © Used through the courtesy of Chevis Publishing Corp.
- Respect* by Otis Redding © Irving Music, Inc. (BMI)
- Secret Love* by Sammy Fain & Paul Francis Webster ©1966 WB Music Corp. (ASCAP)
- Sincerely* words and music by Alan Freed & Harvey Fuqua © Irving Music, Inc., on behalf of Alan Freed Music (BMI) © Liason II Music Publishing (BMI)
- Son Of A Preacher Man* by John Hurley & Ronnie Wilkins © Sony/ATV Songs LLC
- Stupid Cupid* by Howard Greenfield & Neil Sedaka © Screen Gems-EMI Music, Inc.
- Sugartime* by Otis Echols Jr. & Charlie Phillips © Used by permission of MPL Communications, Administered by Melody Lane Publications, Inc.
- Teacher's Pet* by Joe Lubin © Courtesy of Daywin Music (BMI), Administered by Careers-BMG Music Publishing, Inc. (BMI)
- Thank You And Goodnight* by Bob Feldman, Jerry Goldstein, Richard Gottehrer & Marty Sanders © Courtesy of Grand Canyon Music, Inc.
- That's When The Tears Start* by Van McCoy © courtesy of Van McCoy Music, Inc.
- Wedding Bell Blues* by Laura Nyro © EMI Blackwood Music, Inc.
- With This Ring* by Luther Dixon, Anthony Hester & Richard Wylie © Twenty-Nine Black Music, Mietus Copyright
- You Don't Own Me* by John Madara, David White ©1963 Unichappell Music, Inc. (BMI)

---

## ABOUT THE CAST & CREW

---

**Rebeca Lake** (*Betty Jean*) began her college education at Northwest Florida State College, and continued on to double major in Music and Theatre at the University of Mobile. She graduated from the University of Southern Mississippi with her MFA in Technical Theatre with an emphasis in Scenic Design. During her time there, her design and prop work was nominated for and received several awards from the Kennedy Center American College Theatre Festival. Upon graduating, Rebeca became an Associate Professor of Theatre at the University of Mobile until she joined ECTC in August 2019 as the full time Technical Director and co-leader of the Junior Thespian Troupe and high school Company. She is excited to be working on the beautiful Emerald Coast and to be a part of Season 9 at ECTC!

**Arianna Reyhner** (*Missy*) is a performer who was raised in Dallas, TX but moved to Florida for her Masters in Communications Disorders. While in Dallas, she was performing with and teaching at her local community theater (Repertory Company Theater). Some of her most notable roles included Sister Mary Robert (*Sister Act*) and Kim McAfee (*Bye Bye Birdie*). When she is not performing, Arianna can be found helping lead worship at her church, playing the guitar, or working as a pediatric Speech-Language Pathologist! She is thankful for the opportunity to work with ECTC and can't wait for more to come!

**Leigh Gladden** (*Cindy Lou*) Leigh is a Northwest Florida based actor, singer, dancer, voice over artist, & teacher. She was most recently seen in *Around the World in 80 Days* as Aouda at Emerald Coast Theatre Company, and she is ecstatic to be making her way back to the stage in *The Marvelous Wonderettes*. Previously, Leigh toured internationally with *Gobsmacked!*, an a cappella and beatboxing show, as The Woman. She also originated the role of Frenchy in *Grease* onboard Royal Caribbean's Harmony of the Seas. Her most favorite role to date is "mama" to her babies Presley & Everett.

**Aly Matthews** (*Suzy*) is so excited to be performing in her first ECTC production. She has recently performed in *Annie*, *Kiss Me*, *Kate*, *The Outsiders*, and many other productions throughout the years. She is grateful to her friends and family for all their love and support and would also like to thank all those involved in *The Marvelous Wonderettes* for making this the most rewarding experience of her life.

**Vincent Pelligrino** (*Director, Music Director*) is thrilled to return to ECTC. Originally from Michigan, he holds an M.F.A. in Acting from West Virginia University. Regional performance credits include Greenbrier Valley Theatre, Meadowbrook Theatre, RWS Entertainment and Carnival Cruise Line. Last season at ECTC he was seen in *First Date* and *A Christmas Carol*, directed *Florida Girls*, *Popcorn Falls* and *Rainbow Fish*. He is currently serving as Assistant Professor of Theatre at Gulf Coast State College. [www.vincentpelligrino.com](http://www.vincentpelligrino.com)

**Caitlin Eileen Tarabori** (*Stage Manager, Sound Designer*) is the NWF State College Instructional Support Specialist for the Humanities, Fine & Performing Arts Division, by night she is your friendly neighborhood stage manager. She was previously seen in the cast of *Footloose* and *The Hunchback of Notre Dame* at Mattie Kelly Arts Center. She has had the pleasure of stage managing ten previous productions, her favorites include: *The Tragic Life and Death of Dr. Faustus*, *Uptown 1.0*, and *Jesus Christ Superstar*. This is her first-time as lead stage manager for a production at ECTC. She would like to thank the entire ECTC staff for having her.

**Roger Bean** (*Writer*) created the long-running hit *The Marvelous Wonderettes* (over 1,200 performances Off-Broadway), along with the sequels *Wonderettes: Caps & Gowns*, *Winter Wonderettes*, *Wonderettes: Dream On*, and the new large-cast *Wonderettes: Glee Club Edition*. Original cast albums for all *Wonderettes* shows are available from iTunes and Amazon. *The Marvelous Wonderettes* received the 2007 LA Ovation Award for Best Musical for its record-breaking Los Angeles run and continues to be an audience favorite in theatre companies throughout the country. Mr. Bean's do-wop hit *Life Could Be A Dream* had a record-breaking 12-month run in Los Angeles, receiving the Los Angeles Drama Critics Circle Award, the LA Weekly Theatre Award, and the Backstage Garland Award for Outstanding Musical. Other popular musicals created by Mr. Bean include *The Andrews Brothers*, *Summer of Love*, *Route 66*, *Honky Tonk Laundry*, and *Why Do Fools Fall In Love?*, all published by Stage Rights. More info at [www.rogerbean.com](http://www.rogerbean.com)



GRAND  
*Fitness*

**NEW DECADE  
NEW DEDICATION**

**CLASSES INCLUDED WITH MEMBERSHIP**

**\$0 INITIATION FEE WHEN YOU BRING THIS AD IN**

Locally owned and operated, Grand Fitness is a dynamically designed, exclusive, high-end 20,000 square foot fitness facility with top of the line equipment. Certified personal trainers are available for those members who wish to create a custom workout experience tailored to their personal goals. Grand Fitness's temperature-controlled group exercise studios feature special flooring, sound systems and over 40 classes per week — all taught by certified instructors. Senior, Military, Family and Corporate options are available.

440 GRAND BOULEVARD, SUITE 200, MIRAMAR BEACH, FL 32550

850-424-4301 | GRANDFITNESS.COM



@GRANDFITNESSFL



@GRANDFITNESS\_FL

*Emerald Coast Theatre Company Presents*

# MISS ABIGAIL'S GUIDE TO DATING, MATING, & MARRIAGE

Written by Ken Davenport & Sarah Saltzberg

Inspired by the book, "Miss Abigail's Guide to Dating, Mating, and Marriage" by Abigail Grotke

**JANUARY 28 - FEBRUARY 6, 2022**

---



Kindra Steenerson



Elbi Cespedes

---

DIRECTOR

**NATHANAEL FISHER**

STAGE MANAGER & SOUND DESIGN

**PHILIP PADGET**

COSTUME & PROP DESIGN

**ANNA FISHER**

SET & LIGHTING DESIGN

**REBECA LAKE**

---

## SPECIAL THANKS

University of West Florida Theatre Department, Gulf Coast State College Department of Visual and Performing Arts, Habitat for Humanity Restore, Lori Drew, Architectural Signage Systems, RSVP Events, the Leading Ladies of ECTC, and the ECTC Volunteers.

### **Emerald Coast Theatre Company Board**

Stacey Brady, Jamie Hall, Jason Hedden, Sherry Londe,  
Zandra Wolfgram, Melissa Oropesa Carroll, Anna Fisher, Nathanael Fisher

---



Sponsored in part by the State of Florida,  
Department of State, Division of Cultural Affairs  
and the Florida Council on Arts and Culture.



Emerald Coast Theatre Company is a member of  
Theatre Communications Group (TCG),  
the national organization for the American  
theatre.



---

## CAST

---

MISS ABIGAIL..... Kindra Steenerson  
PACO..... Elbi Cespedes

---

There will be one 15 minute intermission.

---

## ABOUT THE WRITERS

---

**Ken Davenport** is a Broadway producer whose credits include *Once On This Island*, *Groundhog Day* (Tony nomination), *The Play That Goes Wrong*, *Spring Awakening* (Tony nomination), *Kinky Boots* (Tony Award), *Mothers and Sons* (Tony nomination), *It's Only a Play*, *Bridges of Madison County*, *Godspell*, *Chinglish*, *Oleanna*, *Speed-the-Plow*, *Will Ferrell's You're Welcome America*, *Blithe Spirit*, *13*, as well as *Daddy Long Legs*, *Awesome 80s Prom*, *My First Time*, *Altar Boyz*, *Miss Abigail's Guide to Dating, Mating, and Marriage* off-Broadway. Ken also serves as the Executive Producer for North America for Andrew Lloyd Webber's Really Useful Group. His current projects include his original musical *Gettin' The Band Back Together*, *Do This*, and revivals of *The Great White Hope* and *Mass Appeal*, as well as the movie, *Band Dorks*.

**Sarah Saltzberg** played Logainne Schwartzandgrubenairre for two years in *The 25th Annual Putnam County Spelling Bee*. She created and developed her character in C-R-E-P-U-S-C-U-L-E (upon which Spelling Bee is based), which she co-produced at the Theatorium in NYC. She most recently appeared in *Fat Camp* (NYMF), and has appeared off-Broadway in *Junie B. Jones* (Lortel Theatre), her one-woman show *Dear Diary* (Ars Nova), as well as throughout NYC in long-form improv comedy with the Upright Citizen's Brigade. Sarah can be seen in the late-night Broadway-themed improv show *Don't Quit Your Night Job*, which she co-created and co-produces ([www.dontquitynyc.com](http://www.dontquitynyc.com)). She is also a co-artistic director of Stage 13, a theater/production company dedicated to cultivating new and original stage, web and film pieces ([www.stage-13.com](http://www.stage-13.com)).

---

## ABOUT THE CAST

---

**Kindra Steenerson** (*Miss Abigail*) is originally from Southern California, but currently resides in Charlotte, NC. She earned her MFA in Performance/Directing from Utah State University. She has been a theatre professor for the past two decades where the bulk of her teaching has been centered around all levels of Acting, Voice & Movement, and Directing. As a professional, she has trained with both Catherine Fitzmaurice and Anne Bogart/SITI Company in NY. Most recently, Kindra appeared as The Angel in *Angels in America* at Carolina Actors Studio Theatre in Charlotte, and as Jennifer Jones in Lee Street Theatre's production of *The Realistic Joneses*. Other favorite roles include Hecuba in *The Trojan Women*, Lady Caroline in *Enchanted April*, Audrey in *Little Shop of Horrors*, and The Baker's Wife in *Into the Woods*. Kindra is the Executive Director of SAGE Acts, and currently teaches at UNC Wilmington and is working on a writing/performance project with New York's TMI Project. She is excited to make her Emerald Coast Theatre debut!

**Elbi Cespedes** (*Paco*) is a SAG-AFTRA actor from New York City who's thrilled to be making his debut with Emerald Coast Theatre Company! Most recently, he starred in an original musical titled *FOCUS* in Boise, Idaho as well as Belfast, Maine. He's a recent graduate of Wagner College where he received a Bachelor's of Arts degree in Theatre Performance. Some of his favorite previous credits include *Somebody* in *Everybody* by Branden Jacob-Jenkins, Orphan (u/s)/Reveler in *Celebration*, and Hans in *Cabaret*. You can follow him @elbito322 on Instagram. Enjoy the show!

# YOUR SKIN DESERVES THE BEST

- ♦Santa Rosa Beach
- ♦Panama City Beach
- ♦Panama City
- & Coming Soon to
- ♦Watersound Origins



**David Chandler, MD**  
Board-Certified Plastic Surgeon

**Michael Stickler, MD & Jon Ward, MD**

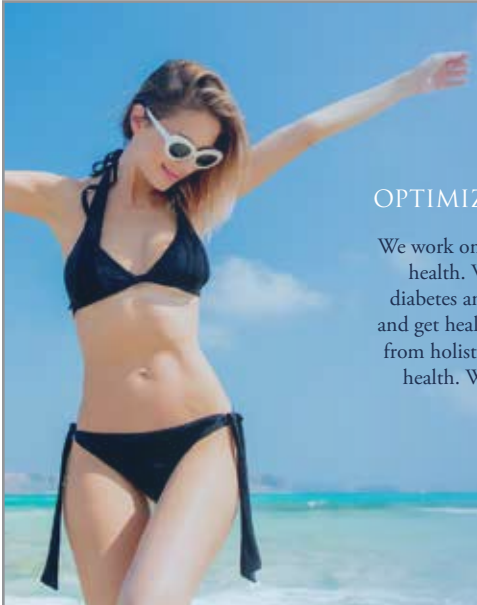
Board-Certified Dermatologists & Mohs Surgeons



**DERMATOLOGY**  
(850) 622-0600  
[MyDermSpecialists.com](http://MyDermSpecialists.com)

**MEDICAL SPA**  
(850) 608-3050  
[AquaMedicalSpa.com](http://AquaMedicalSpa.com)

**PLASTIC SURGERY**  
(850) 608-1833  
[30aPlastics.com](http://30aPlastics.com)



## DR. BAWA & ASSOCIATES

OPTIMIZE YOUR HEALTH, WEIGHT & LOOKS.

We work on not just eliminating disease but helping you optimize health. We can help with complicated health problems like diabetes and heart disease, but we also can help you lose weight and get healthy to help eliminate these problems. We use concepts from holistic medicine and functional medicine to help optimize health. We can help adjust hormones to help you feel better.



[DRBAWA.COM](http://DRBAWA.COM)

Destin, FL  
850-424-7320

Fort Walton Beach, FL  
850-586-7890

Santa Rosa Beach, FL  
850-534-4170

# BE PART OF THE SPRING CLASSES!

**BIG PLAYERS WILLY WONKA JR.**  
3RD-5TH GRADE | TUESDAYS • JAN. 4 - APR. 5, 2022

**MINI PLAYERS WILLY WONKA KIDS**  
K-1ST GRADE | THURSDAYS • JAN. 6 - APR. 7, 2022

**LITTLE PLAYERS WILLY WONKA KIDS**  
2ND-3RD GRADE | THURSDAYS • JAN. 6 - APR. 7, 2022

**WILLY WONKA JR. - DEFUNIAK SPRINGS**  
K-12TH GRADE | MONDAYS • JAN. 10 - APR. 18, 2022

**CRAZY FOR YOU**  
6TH-12TH GRADE | SATURDAYS • JAN. 8 - APR. 30, 2022

**ALL THINGS THEATRE: TEENS**  
5TH-12TH GRADE | TUESDAYS • JAN. 11 - MAR. 29, 2022

**ALL THINGS THEATRE: HOMESCHOOL**  
7-12 YEARS | WEDNESDAYS • JAN. 12 - MAR. 30, 2022

**ALL THINGS THEATRE:**  
HOMESCHOOL TEENS  
13-18+ YEARS | WEDNESDAYS • JAN. 12 - MAR. 30, 2022

**ALL THINGS THEATRE: DISNEY!**  
2ND-5TH GRADE | WEDNESDAYS • JAN. 12 - MAR. 30, 2022

**MUSICAL THEATRE VOICE -**  
WAITRESS, HAIRSPRAY, AND MORE!  
5TH-12TH GRADE | WEDNESDAYS • JAN. 12 - MAR. 30, 2022

**ACTING TECHNIQUE FOR TEENS**  
5TH-12TH GRADE | THURSDAYS • JAN. 13 - MAR. 31, 2022

**MUSICAL THEATRE TEEN DANCE -**  
BROADWAY THROUGH THE DECADES  
5TH-12TH GRADE | FRIDAYS • JAN. 14 - APR. 1, 2022

**ALL THINGS TECHNICAL THEATRE**  
5TH-12TH GRADE | TUESDAYS • APR. 12 - MAY 24, 2022



**Destin 654-9450**  
**Miramar Beach 654-5220**  
**Grand Boulevard 837-2914**

**The stage is set  
and we're ready to  
show...**

**We act on behalf of  
property buyers  
and sellers.**

**Proud Supporters of ECTC**



**Own At The Beach  
Team**

**OwnAtTheBeach.com**

**KW EMERALD COAST**

**KELLERWILLIAMS. REALTY**

**3925 Hwy 30A Ste 101, Santa Rosa Beach, FL 32459**





BUD & ALLEY'S



Good Food. Good People. Good Times.

SEASIDE, FLORIDA

Breakfast, Lunch  
and Dinner

BudandAlleys.com  
850.231.5900

Good Food.  
Good People.  
Good Times.

and...

Proudly Supporting the Arts

★ Voted Best Rooftop Bar  
*Coastal Living Magazine*





# 2 ACROSS

**An eighty-minute ride described by critics as “Hilarious,” “Witty,”  
“Romantic,” “Poignant,” and “Wonderfully entertaining.”**

Written by Jerry Mayer

2 Across premiered at the Santa Monica Playhouse in Santa Monica, CA in November 2004 under the direction of Deborah Harmon.

**FEBRUARY 18 - 27, 2022**

Two strangers, a man and a woman, board a San Francisco BART train at 4:30 a.m. They're alone in the car, each is married, both are doing the New York Times crossword. She's an organized, sensible psychologist. He's a free-spirited, unemployed ad exec. She is a crossword pro, he always quits. When he tosses his puzzle away, she snaps, "Crosswords are a metaphor for life, those who finish, succeed, those who don't, fail." Now he vows to finish. Why? He's a competitor and she happens to be lovely.

---

DIRECTOR  
**NATHANAEL FISHER**

STAGE MANAGER & SOUND DESIGN  
**PHILIP PADGETT**

COSTUME & PROP DESIGN  
**ANNA FISHER**

SET & LIGHTING DESIGN  
**REBECA LAKE**

---

Presented by special arrangement with Samuel French, Inc.  
The videotaping or other video or audio recording of this production is strictly prohibited.

---

## SPECIAL THANKS

University of West Florida Theatre Department, Gulf Coast State College Department of Visual and Performing Arts, Habitat for Humanity Restore, Lori Drew, Architectural Signage Systems, RSVP Events, the Leading Ladies of ECTC, and the ECTC Volunteers.

**Emerald Coast Theatre Company Board**  
Stacey Brady, Jamie Hall, Jason Hedden, Sherry Londe,  
Zandra Wolfgram, Melissa Oropesa Carroll, Anna Fisher, Nathanael Fisher

---



Sponsored in part by the State of Florida,  
Department of State, Division of Cultural Affairs  
and the Florida Council on Arts and Culture.



Emerald Coast Theatre Company is a member of  
Theatre Communications Group (TCG),  
the national organization for the American  
theatre.

There will be one 15 minute intermission.

## ABOUT THE WRITER

**Jerry Mayer**, born and educated in St. Louis, Mo., has had an impressive career in television, writing and producing such prized shows as *M\*A\*S\*H*, *The Bob Newhart Show*, *All in the Family*, *The Mary Tyler Moore Show*, *The Facts of Life* and five Mitzi Gaynor's TV Specials, plus her famous Las Vegas Act. Mr. Mayer thoroughly enjoyed his TV career, but has happily discovered that by far his first love is writing for the theatre. Five of his plays can be found in the Samuel French catalogue. Mr. Mayer's award winning plays and musicals have appeared successfully in New York city three times (Off Broadway) and in hundreds of theatres all over the US and Canada, as well as in Europe. Most of Mr. Mayer's plays deal with the 'ups, downs and sideways' of male/female relationships, for which he humbly thanks the guidance of his lovely muse/wife (for lots of years), Emily Bettman Mayer.



### The Art of Community

We are proud to stand alongside the Emerald Coast Theatre Company in support of their powerful mission to enrich and entertain the Emerald Coast community.



[TheHenderson.com/love-locals](http://TheHenderson.com/love-locals)

Proud sponsor of the Emerald Coast Theater Company



[TheHenderson.com](http://TheHenderson.com)



ECTC JR. COMPANY PRESENTS...



# OLD MACDONALD

**THEATRE FOR THE VERY YOUNG:  
INTERACTIVE THEATRE**

Complete with an animal orchestra, this interactive children's show combines movement, touchable props, and music that will have you singing "E I E I O" all the way home!

**APRIL 1, 2, 15, 16 at 9:00AM**

# STORYTELLER SERIES

Tuesdays

**JANUARY 11, 2021 - MARCH 1, 2022**

---

## SCHEDULE

JANUARY 11

### **THE FALL OF APRIL (STALIN AND CHURCHILL)**

Written & Performed by Bruce Collier

FEBRUARY 8

### **GIVE 'EM HELL HARRY!**

Alan Tuttle as Harry Truman

MARCH 1

### **KATHARINE HEPBURN**

Shirley Simpson as Katharine Hepburn

---

## SPECIAL THANKS

University of West Florida Theatre Department, Gulf Coast State College Department of Visual and Performing Arts, Habitat for Humanity Restore, Lori Drew, Architectural Signage Systems, RSVP Events, the Leading Ladies of ECTC, and the ECTC Volunteers.

### **Emerald Coast Theatre Company Board**

Stacey Brady, Jamie Hall, Jason Hedden, Sherry Londe,  
Zandra Wolfgram, Melissa Oropesa Carroll, Anna Fisher, Nathanael Fisher



Sponsored in part by the State of Florida,  
Department of State, Division of Cultural Affairs  
and the Florida Council on Arts and Culture.



Emerald Coast Theatre Company is a member of  
Theatre Communications Group (TCG),  
the national organization for the American  
theatre.

---

## ABOUT THE STORYTELLERS

---



**Alan Tuttle** (*Harry S. Truman in Give 'Em Hell Harry!*) has been involved in theatre for nearly six decades. He has appeared most recently in several productions of Fort Walton Beach's community theatre, Stage Crafters, as a member of the ensemble in *Sound of Music*, *Music Man*, and *Damn Yankees*; as Manolo in *Odd Couple (the Female Version)*, in *Bad Seed* playing Leroy, and as several favorite characters in *Spamalot!* He assisted the director of *Lakebottom Proper*, stage managed *Steel Magnolias*, produced *Noises Off*, and directed Neil Simon's *Rumors*. Alan's Air Force career spans over thirty years, first as aircrew and now as a civilian, teaching air operations strategy to joint and multinational military members. Alan and his wife Lisa have four children and five grandchildren.



**Bruce Collier** (*Josef Stalin, Winston Churchill, and Franklin Roosevelt in The Fall of April (Stalin and Churchill)*) An Ohio native, Bruce has a B.F.A. degree in Theatre from Wright State University, and a J.D. from Tulane Law School in New Orleans. He worked for four years as a public defender in New Orleans. Bruce has performed professionally in summer stock in Ohio, at Alabama Shakespeare Festival, the Courtyard Playhouse in New York City, New Horizons Theatre in Michigan, The REP at Seaside, and Emerald Coast Theatre Company (ECTC). At ECTC, Bruce has appeared in *Bakersfield Mist*, *A Wrinkle in Time*, *Winston Churchill: Through the Storm*, *It's a Wonderful Life*, *Around the World in 80 Days*, *The Fantasticks*, *A Christmas Carol*, and *Treasure Island*. He has also performed at The REP at Seaside in *The Homecoming*, *Who's Afraid of Virginia Woolf?*, and *Picasso at the Lapin Agile*. In 2021, as part of ECTC's Storyteller Series, Bruce premiered his original script, *Three Palaces at Yalta*, playing Josef Stalin, Winston Churchill and Franklin Roosevelt. January 11 of 2022, he will premiere *The Fall of April*, playing Stalin and Churchill, at ECTC. Both *Yalta* and *Through the Storm* were recently performed at Athens Chautauqua Festival in Georgia. Most recently, Bruce directed *Picasso at the Lapin Agile* at Northwest Florida State College.



**Shirley Simpson** (*Katharine Hepburn*) most recently appeared as Hannah in the musical *The Spitfire Grill* at New Stage Theatre in Jackson, MS. Also at New Stage, she played Grace in *Grace & Glorie*, the title role of *Shirley Valentine*, Kendall Kingsley in *Impossible Marriage*, and Vada Love in *The Exact Center of the Universe*. At The LSU Colonnade Theatre in Baton Rouge, she played *Shirley Valentine*, and directed and played the role of Elaine in Neil Simon's *Last of the Red Hot Lovers*. Other stage roles in Baton Rouge include Maggie in *Tribute*, Fonsia Dorsey in *The Gin Game*, Queen Eleanor in *The Lion in Winter*, and Kate in both *Brighton Beach*

*Memoirs* and *Broadway Bound*. She starred as Laurette Taylor in an off-Broadway production based on the opening night of Tennessee Williams' *The Glass Menagerie*. Other favorite regional theatre roles were in *Finishing Touches*, *Forty Carats*, *Someone Waiting*, *Only in America*, *Close Ties*, and *Suddenly at Home*. Film credits include *Everybody's All American* and *Blues in the Night*. The owner of Magna Carta Productions, Mrs. Simpson conducts workshops and provides keynote speeches on communication, leadership, and creativity, as well as presenting programs of comedy and drama, for civic, professional, and church organizations. A former producer, writer, and performer in the New York Madison Avenue television market, her TV series *The Vital Link* was nominated for and won the ACE AWARD. Mrs. Simpson is a member of Actor's Equity Association and is contributing her performance fees to Sacred Heart.

# OH MY GOSH YOU GUYS!

Thanks to **Aaron & Jennifer Lewis**  
for supporting ECTC!



THANK YOU TO



FOR SUPPORTING ECTC AS A THEATRE FOR  
YOUNG AUDIENCES SPONSOR

[WWW.WELLSVISIONCENTER.COM](http://WWW.WELLSVISIONCENTER.COM)



# Pazzo Italiana

RISTORANTE & BAR

Destin  
34904 Emerald Coast  
Pkwy #114  
pazzodestin@gmail.com  
850.974.5484

CATERING OPTIONS  
- PRIVATE ROOMS -  
- OFFSITE CATERING -  
- MOBILE PIZZA OVEN -  
WWW.PAZZODESTIN.COM

Santa Rosa Beach  
111 North Country Hwy 393  
#301  
pazzosrb@gmail.com  
850.213.4581



LET THE SHOW BEGIN

## BIG BANDS & JAZZ

Every Saturday and Sunday from  
8 to 10 p.m. on WUWF 88.1 FM.

Join Dale Riegler as he  
presents a great mix of  
contemporary and classic jazz  
and big band recordings.

**wuwf 88.1**  
NPR for Florida's Great Northwest

close with confidence.

*Over 40 years of combined  
residential and commercial  
real estate closing experience.*



**SHORELINE**  
TITLE

locally owned & operated

850.308.7107

60 Clayton Lane | Suite B  
Santa Rosa Beach, FL 32459

shorelinetitlellc.com

PERFECTING PERFECTION  
SINCE 1965



THIS IS  
HOW IT'S  
DONE

15000 Emerald Coast Pkwy, Destin - 850.837.RUTH (7884)  
f t i ruthsdestin · ruthschristestin.com

Progress  
Looks Like  
Decisions Made  
At The  
Local Level



MEMBER  
FDIC  
Equal Housing  
Lender  
NMLS# 401921

**Dewayne Youngblood**  
EVP | Okaloosa & Walton  
County Market President

 **Progress Bank**  
myprogressbank.com

---

## ABOUT THE PRODUCTION TEAM

---

**NATHANAEEL FISHER** (Producing Artistic Director) is the cofounder of Emerald Coast Theatre Company (ECTC). A Florida native, Nathanael received his B.A. in Theatre Studies from Palm Beach Atlantic University and later went on to receive his M.F.A. in Acting at Regent University. Immediately following undergraduate studies, his professional career was launched through the Equity Membership Candidacy Program at Jupiter Theatre. Nathanael has had the pleasure of performing on many of the stages throughout Florida, including American Stage, Eckert Theatre Co., Burt Reynolds Theatre, Angel Garden Theatre, Ballet Florida, The Mark II, Riverside Theatre, and Seaside Music Theatre as well as on stages across the United States. Favorite roles include Chris in *All My Sons*, Pete in *Crazy for You*, Sohovic in *Damn Yankees*, Gerry in *Dancing at Lughnasa*, and Rochefort in Ken Ludwig's adaptation of *The Three Musketeers*. As a producer, he has presented two projects at the Orlando International Fringe Festival and founded the Regent Educational Theatre Tour that performed abridged Shakespeare and socially relevant plays for middle and high school students. Nathanael has directed productions of *reasons to be pretty*, *A Christmas Carol*, and *Anton in Show Business* at University of West Florida and adapted and directed *A Christmas Carol* into a three actor play called *A Dickens Christmas* for ECTC. Nathanael has also written several Theatre for Young Audiences plays (*The Pirate Who Learns to Say Please*, *Pirate Pete* and *the Case of the Missing Fisherman*, and *The Adventures of Andy the Angler*) as well as directed over 40 productions for ECTC. Over the course of his career, Nathanael has directed Shakespeare, children's theatre, theatre for young audiences, and professional theatre, as well as taught theatre classes for ages 6 through adult. Nathanael lives in Santa Rosa Beach with his wife Anna, the littlest Fisher Zoe, and twin teen daughters Mia and Bella.

**ANNA FISHER** (Associate Artistic & Education Director of ECTC; Costume & Props Design) is a Destin native and has returned to her roots here on the Emerald Coast. She graduated with her B.A. in English Literature from Samford University and went on to receive her Master's in Theatre Studies from Regent University. Anna enjoys every facet of the stage and has become well versed in the art of directing, producing, design, costuming, writing, and teaching. Some of her recent favorite projects include costume and props designer for *The Fantasticks*, *Around the World in 80 Days*, *Pinkalicious the Musical*, and *First Date*. When she's not busy writing marketing content and costuming actors, you can find her relaxing at the beach with her husband Nathanael and their twin daughters Mia and Bella, and

the littlest Fisher, Zoe Claire.

**PHILLIP PADGETT** (Stage and Production Manager) is a graduate from the University of Mobile, where he studied film and theatre. While studying in college, he was the founder and Director of Act1, a touring theatre ensemble. Act1 traveled all across the country as well as the Ukraine. Phillip worked in New York City, where he worked on productions such as *The Other Josh Cohan* and *The Screwtape Letters among others*. While in New York, he served as the group sales representative for Fellowship for Performing Arts and theatrical house manager for The Westside Theatre. Phillip is the director of Troupe, Jr Company, and ECTC Teen Player productions at ECTC and has the honor of working with so many talented students. Phillip is grateful to be working at such an amazing place as ECTC along with his beautiful wife Tara Padgett.

**REBECA LAKE** (Lighting & Set Design) began her college education at Northwest Florida State College, and continued on to double major in Music and Theatre at the University of Mobile. She graduated from the University of Southern Mississippi with her MFA in Technical Theatre with an emphasis in Scenic Design. During her time there, her design and prop work was nominated for and received several awards from the Kennedy Center American College Theatre Festival. Upon graduating, Rebeca became an Associate Professor of Theatre at the University of Mobile until she joined ECTC in August 2019 as the full time Technical Director and co-leader of the Junior Thespian Troupe and high school Company. She is excited to be working on the beautiful Emerald Coast and to be a part of Season 9 at ECTC!

**TARA PADGETT** (Costume Assistant & Teaching Artist) is a graduate of University of Mobile in Musical Theatre. Two years ago, Tara moved to the area from New York City with her husband, Phillip. Throughout her collegiate career, Tara traveled with a vocal ensemble (Sounds of Mobile) and assisted with the costuming of many mainstage shows, including but not limited to: *White Christmas*, *The Marriage of Figaro*, *Crazy for You*, and *The Secret Garden*. In her professional career, Tara continued in costume work with Off-Broadway shows like, *Pip's Island* and *Revelation: The Musical*, as well as work with entertainment agencies like RWS Entertainment. At ECTC, Tara has directed shows for our Big, Little, and Mini Players, the most recent of which is *Frozen KIDS*. She also assists with helping our Teen Players. Tara is overjoyed to be part of the ECTC production team and looks forward to another season of creating and collaborating.

## PRODUCTION STAFF

Lighting & Set Design Rebeca Lake

Stage and Production Manager Phillip Padgett

House Manager, Costumes & Props Anna Fisher

Box Office Manager Mariza Alvares

Assistant Stage Manager & Costumes Tara Padgett

Graphic Design Bradley Akers

Public Relations Zandra Wolfram

Sound Engineer Derrick Gainey

Assistant Lighting Designer Nathan Saczynski

Assistant Scenic Designer Walker Rivard

Assistant Stage Manager Caitlin Eileen TaraBori

Art Gallery coordinated by the Cultural Arts Alliance of Walton County  
Business consulting provided by Wilson CPA & Consulting

*Over 30 years of combined  
corporate and real estate legal experience*

**B | W**

**BARKER WILLIAMS**  
ATTORNEYS AT LAW

INTEGRITY. COMMITMENT. EXCELLENCE.



**KIRBY H. WILLIAMS**  
Board Certified  
Real Estate Attorney



**FARRAR J. BARKER**  
Corporate Attorney

850.308.7033

60 CLAYTON LANE | SUITE B  
SANTA ROSA BEACH, FLORIDA 32459

[barkerwilliamslaw.com](http://barkerwilliamslaw.com)

**THANK YOU TO**

**ARCHITECTURAL  
SIGNAGE  
& PRINTING**

**FOR SUPPORTING  
ECTC WITH  
PRINTING AND  
SIGNAGE**

**[WWW.PRINTINGBYASAP.COM](http://WWW.PRINTINGBYASAP.COM)**

# FULL SEASON SPONSORS

## MAJOR SEASON:



## EXECUTIVE PRODUCER:

Ocean Reef Vacation Rentals

## PROFESSIONAL PROGRAM SPONSORS

### PERFORMING:

Emerald Coast Wealth Advisors of Raymond James  
Own at the Beach Team,  
Keller Williams Emerald Coast  
Vin'ij Food & Wine

### PARTNER:

A Superior Air Conditioning  
Destin Cleaners  
Emerald Coast Association of Realtors®  
Grand Fitness  
Mary Hong Gallery

### COMMUNITY:

Bud & Alley's Waterfront Restaurant  
CNS Millworks  
Dermatology Specialists of Florida  
Dr. Bawa & Associates  
The Henderson  
Pazzo Italiano  
Ruth's Chris Steak House

## THEATRE FOR YOUNG AUDIENCES SPONSORS

### SHOW SPONSOR:

Premier Media Technologies  
*(The Snow Queen & Old MacDonald)*

### PRESENTING:

Cultural Arts Alliance of Walton County

### DIRECTOR:

Progress Bank  
Wells Vision and Laser Eye Center

## EDUCATIONAL THEATRE SPONSORS

Architectural Signage & Printing  
Barker Williams, PLLC  
Shoreline Title

Thank you to these Sponsors, VIP Members, and Donors that support ECTC. Because of their support we are able to reach hundreds of children each year through our Theatre for Young Audiences, Educational, Touring, and Field Trip programs all while providing enriching and entertaining professional productions for our community. Thank you for being a part of the TRIBE!

## ECTC would like to thank these Media Sponsors:



## MEMBERSHIPS

### VIP MEMBERS LIST 2021/2022 SEASON

Dona Badgett <sup>^</sup>	Susan Emanuel <sup>*</sup>	Brittany Matthews	Karen Ruhlman <sup>**</sup>
Cate Barber	Carol Fearon <sup>**</sup>	Jane McCauley	Chris and Kathy Scalet <sup>**</sup>
Michelle Bailey <sup>**</sup>	Lori Fields	PJ and Genevieve Metzger	Barbara and William Schleuter <sup>**</sup>
Carole Bergstrom <sup>^</sup>	Dr Leslie & Pam Fleischer <sup>*</sup>	Sharon Morrow <sup>^</sup>	Betty Schwab
Deborah Bigum <sup>*</sup>	Jessica Fowler	Peggy Sue Mullen <sup>^</sup>	Scott and Susan Seeger <sup>^</sup>
Tina Burke <sup>^</sup>	Mark and Karen Gergel <sup>*</sup>	Gail Murray <sup>^</sup>	Ann Stone
Debra Cannon <sup>*</sup>	Denise and Kevin Greene <sup>^</sup>	Jeannie Ogle <sup>^</sup>	Christine Stringer
Robbie Carroll <sup>^</sup>	Linda Habib <sup>^</sup>	Matt and Britney Page <sup>*</sup>	James and Jan Wallace <sup>^</sup>
Francis and Gwen Cartier <sup>^</sup>	Kathleen Hall <sup>^</sup>	Jan Patrick <sup>*</sup>	Lara Watt
Phyllis Chapin <sup>^</sup>	Roger and Susan Hall <sup>**</sup>	Nanette Ream <sup>^</sup>	Joyce Waters-Smith
Evelyn Clark <sup>*</sup>	Nicole Hopkins <sup>*</sup>	Chris Reese	Mr. and Mrs. Thomas Wiley
Robert and Barbara Carver <sup>**</sup>	Lindsay and Walt Huurman <sup>^</sup>	John and Lisa Reinking <sup>^</sup>	Beth White
Doug and Jeanne Cosentino	Terry and Cynthia Hyatt <sup>^</sup>	Peggy Reis <sup>^</sup>	Gwen Yandall
Kay Cost	Martha Jones	Ginny Richerson and Paul Naberezny	Judy Zito <sup>**</sup>
Kay Crawford <sup>^</sup>	Bonnie Keeney	Bo and Nicole Rivard <sup>*</sup>	Christine and Bill Zollinger <sup>^</sup>
Dorrell Dobria <sup>^</sup>	Marie Locerfosa	Jan Rogers <sup>**</sup>	
Muriel Dollar <sup>*</sup>	Timothy and Margy Lamb <sup>^</sup>	Deborah Ruff <sup>*</sup>	
Pam Doyle <sup>**</sup>	James and Gayle Lockwood		

### SILVER MEMBERSHIP

Nancy Abraham	Sherry Londe <sup>^</sup>
Alan and Valerie Collier	David and Edina Mann <sup>*</sup>
Elizabeth Cork <sup>^</sup>	Daniel Mattiodo <sup>*</sup>
Debra and John Gautreau	Kelly Mustain <sup>*</sup>
Ken and Corina Gestring <sup>^</sup>	Connie Yarbro <sup>^</sup>
Peggy Hayes <sup>^</sup>	Deborah and Elizabeth Young <sup>*</sup>
Bryan and Mary Hemard <sup>^</sup>	
George and J.R. Hendricks <sup>^</sup>	
Bob and Cindy Launch <sup>^</sup>	
Debbie Linton <sup>^</sup>	

### LEGACY MEMBERSHIP (\$10,000+)

Shirley Simpson<sup>^</sup>

### GOLD MEMBERSHIP

Noah Drennan <sup>^</sup>	Alex and Kerri Rusnytk <sup>*</sup>
Mary Hong <sup>^</sup>	Al and Nancy Sack <sup>^</sup>
Jerry and Carol McEwen <sup>*</sup>	Mr. and Mrs. Thomas Stanton

### PLATINUM MEMBERSHIP (\$5,000+)

Eric and Theresa Bolton <sup>^</sup>	John and Kathy Pleune <sup>^</sup>
Anglea and Billy Drennan <sup>^</sup>	

### PRODUCERS CIRCLE (Donors \$5,000+)

Eric & Teresa Bolton <sup>^</sup>
John Pleune <sup>^</sup>

<sup>\*</sup> Member for 2 years    <sup>\*\*</sup> Member for 3 years    <sup>^</sup> Member for 4 or more years

Please contact a staff or board member for higher levels of giving.

ECTC would like to thank those sponsors, members, and donors whose names were not available at the time of printing.



# VIP MEMBERSHIPS

With our VIP Membership support we are able to offer a variety of high quality productions for audiences of all ages as well as reach hundreds of children through our Educational Theatre programs and field trips. We depend on our VIP patrons each season to join us in providing our community with the kind of poignant, heartwarming, funny, and thought provoking shows that have become Emerald Coast Theatre Company's signature.

We appreciate your support and as a thank you we would like to offer the following in your VIP Membership: Tickets to shows as listed with each membership level, a VIP name tag, VIP reserved seats (advanced reservations required) to the productions, access to the VIP Lounge, eight complimentary drinks (wine, beer, or water) for the season, recognition on the ECTC website and in the printed programs, and 10% off all classes, camps, and additional tickets for shows.

*\*Does not include tickets for the Storyteller Series, Special Events, and Fundraisers.*



## \$400 & includes a VIP Membership

VIP benefits that include one ticket to each of the SIX Professional Productions, and 4 Flex Pass tickets to use for any Theatre for Young Audiences, Theatre for the Very Young, or Educational Theatre production.

*(Ticket Value \$292, Reserved Seat/Wine Value \$172, Total Value \$464, \$0 Donation)*

## VIP FOR TWO \$800 and includes two VIP Memberships

*(Ticket Value \$584, Reserved Seat/Wine Value \$344, Total Value \$928, \$0 Donation)*



## \$600 & includes a VIP Silver Membership

VIP benefits that include 6 Flex Pass tickets to use for any Professional Production desired, and 4 Flex Pass tickets to use for any Theatre for Young Audiences, Theatre for the Very Young, or Educational Theatre production.

*(Ticket Value \$292, Reserved Seat/Wine Value \$172, Total Value \$464, plus \$116 Donation\*\* = \$600)*

## VIP SILVER FOR TWO \$1,200 and includes two VIP SILVER Memberships

*(Ticket Value \$584, Reserved Seat/Wine Value \$344, Total Value \$928, plus \$232 Donation\*\* = \$1,200)*



## \$1,250 & includes a VIP Gold Membership

VIP benefits that include 8 Flex Pass tickets to use for any Professional Production desired, 4 Flex Pass\* tickets to use for any Theatre for Young Audiences, Theatre for the Very Young, or Educational Theatre production, and 4 Flex Pass tickets to use for any Special Event/Storyteller Series event.

*(Ticket Value \$488, Reserved Seat/Wine Value \$212, Total Value \$700, plus \$550 Donation\*\* = \$1,250)*

## VIP GOLD FOR TWO \$2,500 and includes two VIP GOLD Memberships

*(Ticket Value \$976, Reserved Seat/Wine Value \$424, Total Value \$1400, plus \$1,100 Donation\*\* = \$2,500)*



## \$5,000 & includes two VIP Platinum Memberships

VIP benefits that include 16 Flex Pass tickets to use for any Professional Production desired, 8 Flex Pass tickets to use for any Theatre for Young Audiences, Theatre for the Very Young, or Educational Theatre production, and 8 Flex Pass tickets to use for any Special Event/Storyteller Series event.

*(Ticket Value \$976, Reserved Seat/Wine Value \$424, Total Value \$1400, plus \$3,600 Donation\*\* = \$5,000)*



## \$10,000 & includes two VIP Legacy Memberships

VIP benefits that include 16 Flex Pass tickets to use for any Professional Production desired, 8 Flex Pass tickets to use for any Theatre for Young Audiences, Theatre for the Very Young, or Educational Theatre production, and 8 Flex Pass tickets to use for any Special Event/Storyteller Series event, and an invitation to an exclusive private dinner with the artistic leadership of ECTC.

*(Ticket Value \$976, Reserved Seat/Wine Value \$424, Total Value \$1400, plus \$8,600 Donation\*\* = \$10,000)*

To become a VIP Member visit the Box Office, sign up at [emeraldcoasttheatre.org/support](http://emeraldcoasttheatre.org/support), or call 850-684-0323.